

\*CANCUN Departure (B)  
119.8

Apv Elev  
20'

Trans level: FL 195 Trans alt: 18500'

MMUN/CUN  
CANCUN INTL

16 OCT 09 10-3C Eff 20 Oct

CANCUN, MEXICO  
SID

2000'

MSA CUN VOR

CUPTE ONE CHARLIE, KUMOC ONE CHARLIE,  
SAMED ONE CHARLIE, VIPSA ONE CHARLIE SIDs  
require minimum climb gradient of  
500' per NM until 4000'.

Gnd speed-KT	75	100	150	200	250	300
500' per NM	625	833	1250	1667	2083	2500

SID

CANCUN ONE CHARLIE

Climb on NCP R-304 to D4 NCP, (or 400' in case of DME failure). Turn RIGHT within 6 NM to CUN and depart at the MCA for the assigned route or in accordance with ATC instructions.

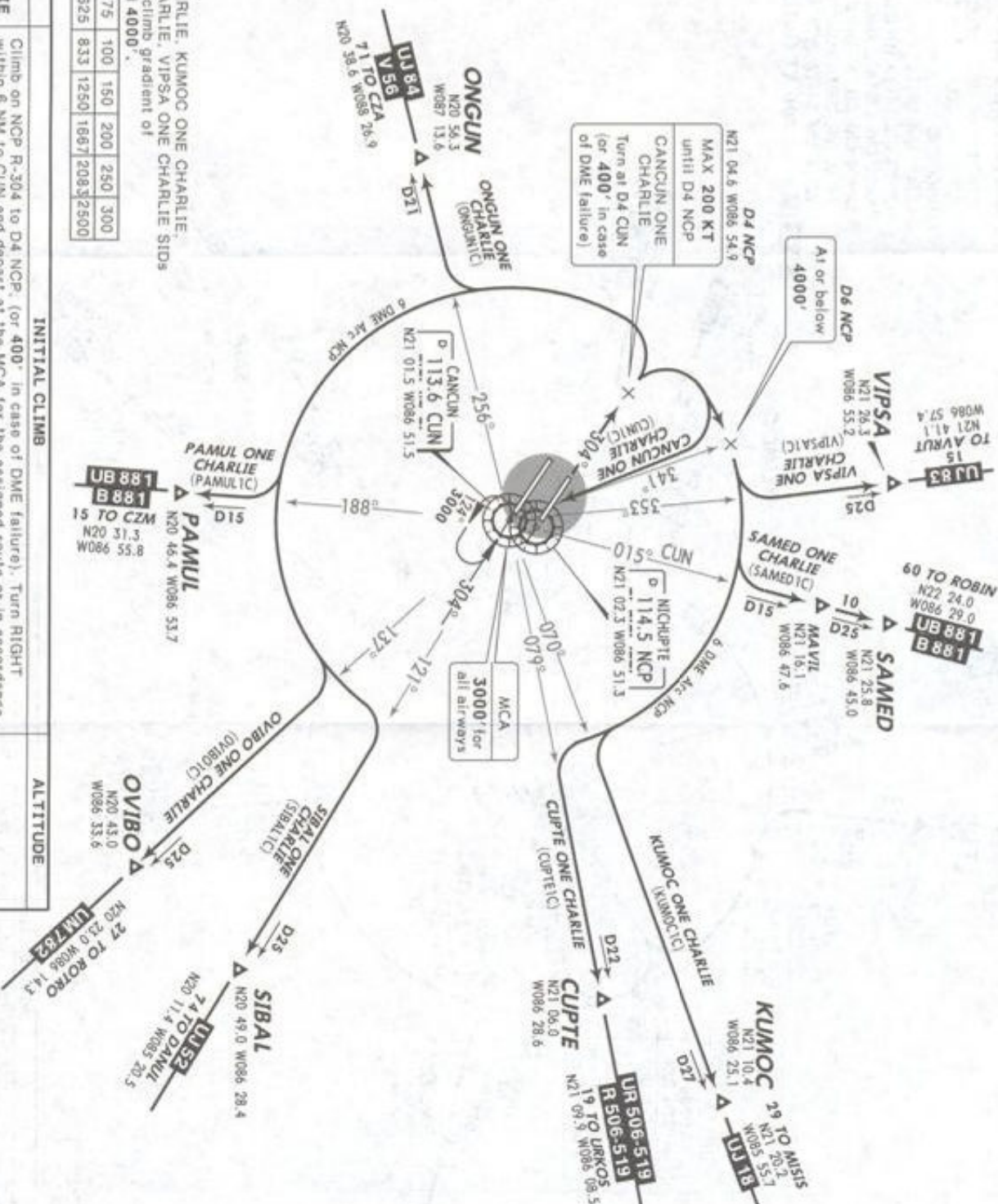
INITIAL CLIMB

ALTITUDE

CUPTE ONE CHARLIE  
KUMOC ONE CHARLIE  
SAMED ONE CHARLIE  
VIPSA ONE CHARLIE  
ONGUN ONE CHARLIE  
PAMUL ONE CHARLIE  
SIBAL ONE CHARLIE

Climb on NCP R-304 to D4 NCP. Turn RIGHT on NCP 6 DME Arc to intercept the corresponding radial from CUN to CUPTE, KUMOC, SAMED or VIPSA. Then continue on the assigned route or in accordance with ATC instructions.

MAINTAIN 7000'  
Continue climb  
in accordance with  
ATC instructions



DEPARTURES RWY 30R  
CANCUN ONE CHARLIE (CUNIC),  
CUPTE ONE CHARLIE (CUPTEIC),  
KUMOC ONE CHARLIE (KUMOCIC),  
ONGUN ONE CHARLIE (ONGUNIC),  
OVIPO ONE CHARLIE (OVIPOIC),  
PAMUL ONE CHARLIE (PAMULIC),  
SAMED ONE CHARLIE (SAMEDIC),  
SIBAL ONE CHARLIE (SIBALIC),  
VIPSA ONE CHARLIE (VIPSAIC)

SPEED: MAX 200 KT  
UNTIL D4 NCP

