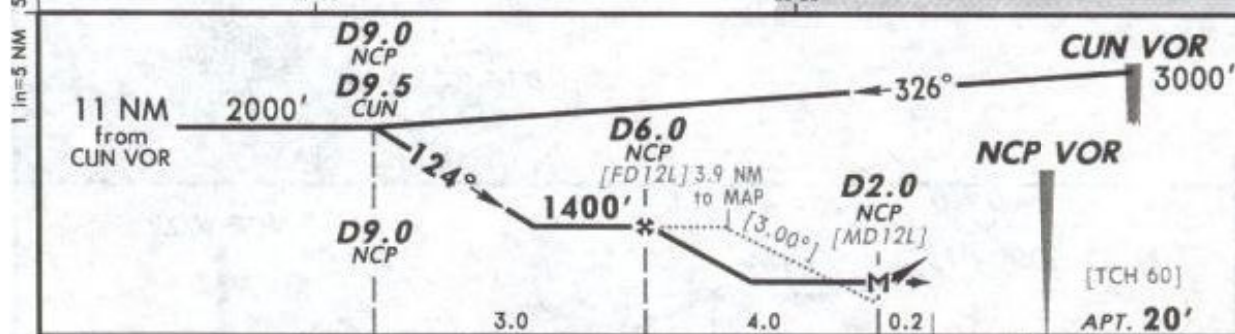
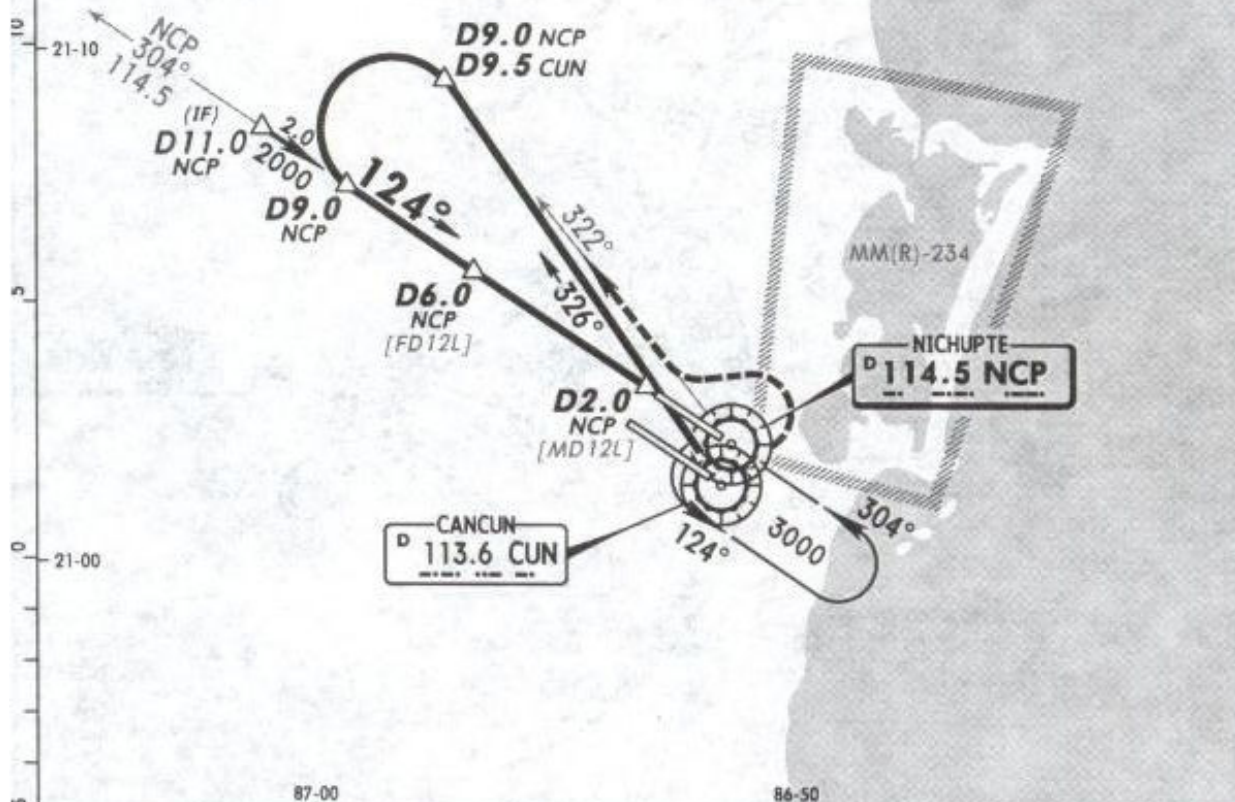


MMUN/CUN
CANCUN INTL

13 NOV 09 (13-1)

CANCUN, MEXICO
VOR DME 1 Rwy 12L

*ATIS 127.7	*CANCUN Approach (R) 121.1	CANCUN Arrival 123.2	CANCUN Tower 118.6	*Ground 121.7
VOR NCP 114.5	Final Apch Crs 124°	Minimum Alt D6.0 1400' (1380')	MDA(H) 420' (400')	Apt Elev 20'
<p>MISSED APCH: LEFT turn to intercept NCP VOR R-322 outbound to D9.0 NCP, then turn LEFT to intercept NCP VOR R-304 inbound to NCP VOR to the minimum holding altitude.</p> <p>Alt Set: MB (IN on req) Apt Elev: 1 MB Trans level: FL 195 Trans alt: 18500' MSA CUN VOR</p>				



Gnd speed-Kts	70	90	100	120	140	160
Descent angle [3.00°]	372	478	531	637	743	849
MAP at D2.0 NCP						

ALS	REIL	PAPI	LT	NCP 114.5 to D9.0 NCP
				R-322

STRAIGHT-IN LANDING RWY 12L			CIRCLE-TO-LAND	
MDA(H) 420' (400')			Not Authorized Southwest of Rwy 12L/30R	
ALS out			Max Kts	MDA(H)
A	1		90	480' (460') - 1
120			480' (460') - 1½	
140				
D	1¼		165	580' (560') - 2