

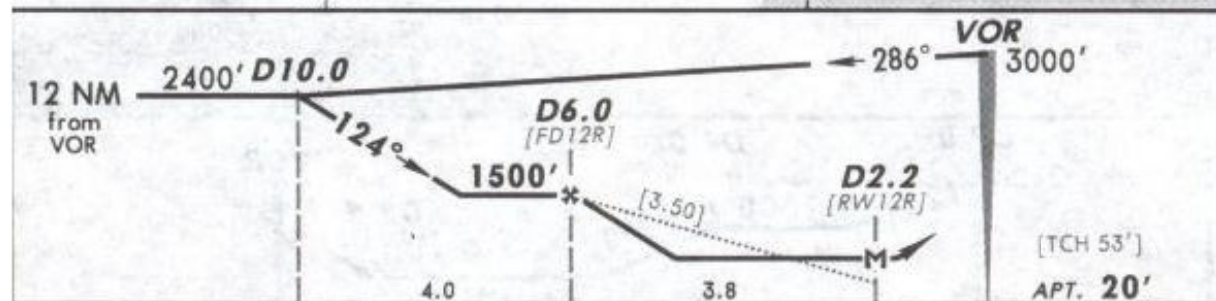
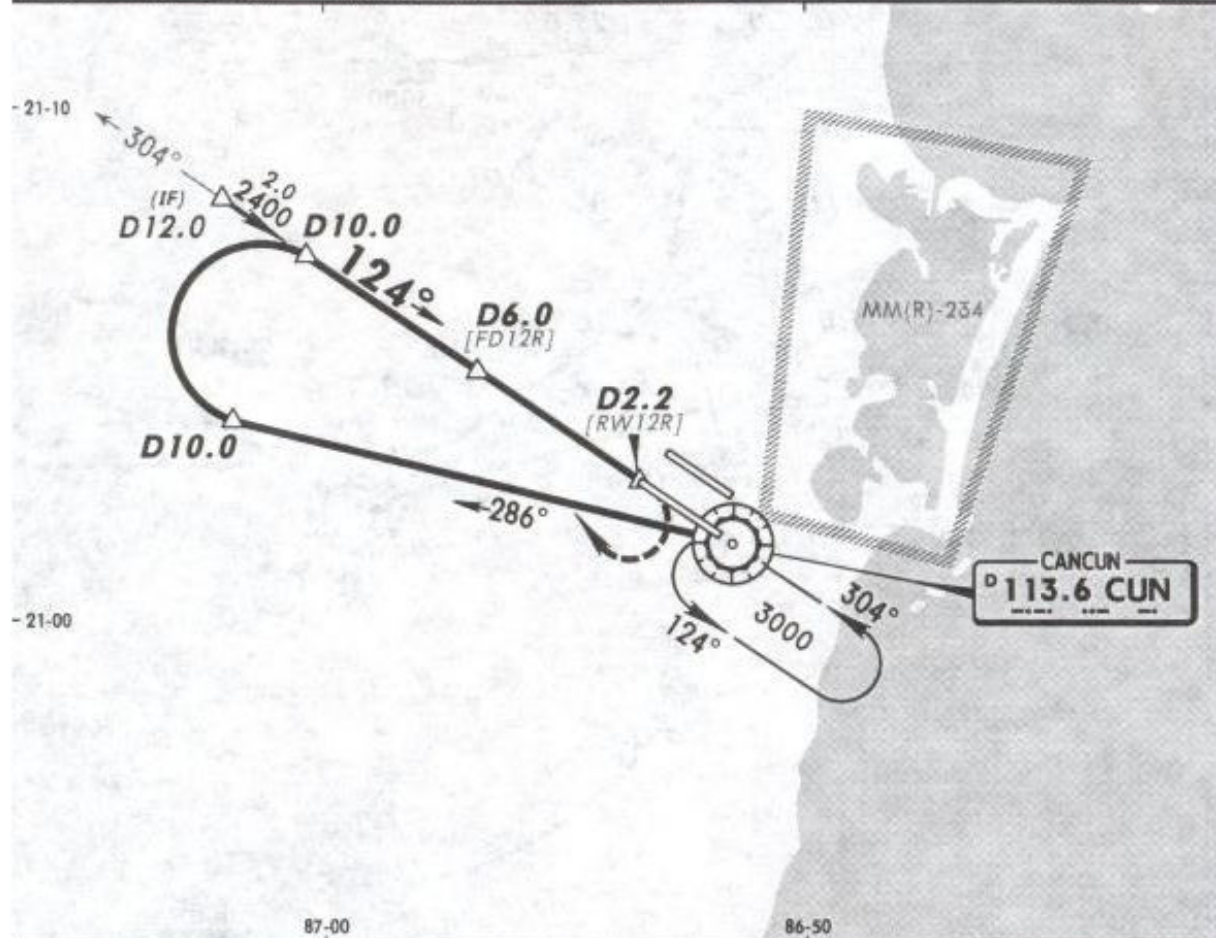
MMUN/CUN
CANCUN INTL

13 NOV 09

(13-3)

CANCUN, MEXICO
VOR DME 1 Rwy 12R

*ATIS 127.7	*CANCUN Approach (R) 121.1	CANCUN Arrival 123.2	CANCUN Tower 118.6	*Ground 121.7
VOR CUN 113.6	Final Apch Crs 124°	Minimum Alt D6.0 1500' (1480')	MDA(H) 420' (400')	Apt Elev 20'
<p>MISSED APCH: RIGHT turn to intercept CUN VOR R-286 outbound, at D10.0 turn RIGHT to intercept CUN VOR R-304 inbound to CUN VOR to the minimum holding altitude.</p>				2000'
Alt Set: MB (IN on req) Apt Elev: 1 MB Trans level: FL 195 Trans alt: 18500'				MSA CUN VOR



Gnd speed-Kts	70	90	100	120	140	160	ALSF	CUN
Descent angle [3.50°]	434	557	619	743	867	991	REIL PAPI	113.6 to D10.0
MAP at D2.2							RT	R-286

STRAIGHT-IN LANDING RWY 12R				CIRCLE-TO-LAND			
MDA(H) 420' (400')				Not Authorized Northeast of Rwy 12R/30L			
ALS out				Max Kts	MDA(H)		
A				90	480' (460') - 1		
B	1			120			
C				140	480' (460') - 1½		
D	1¼			165	580' (560') - 2		