

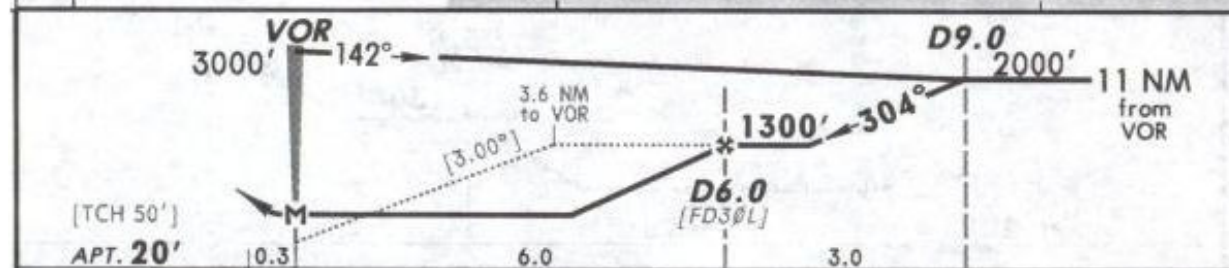
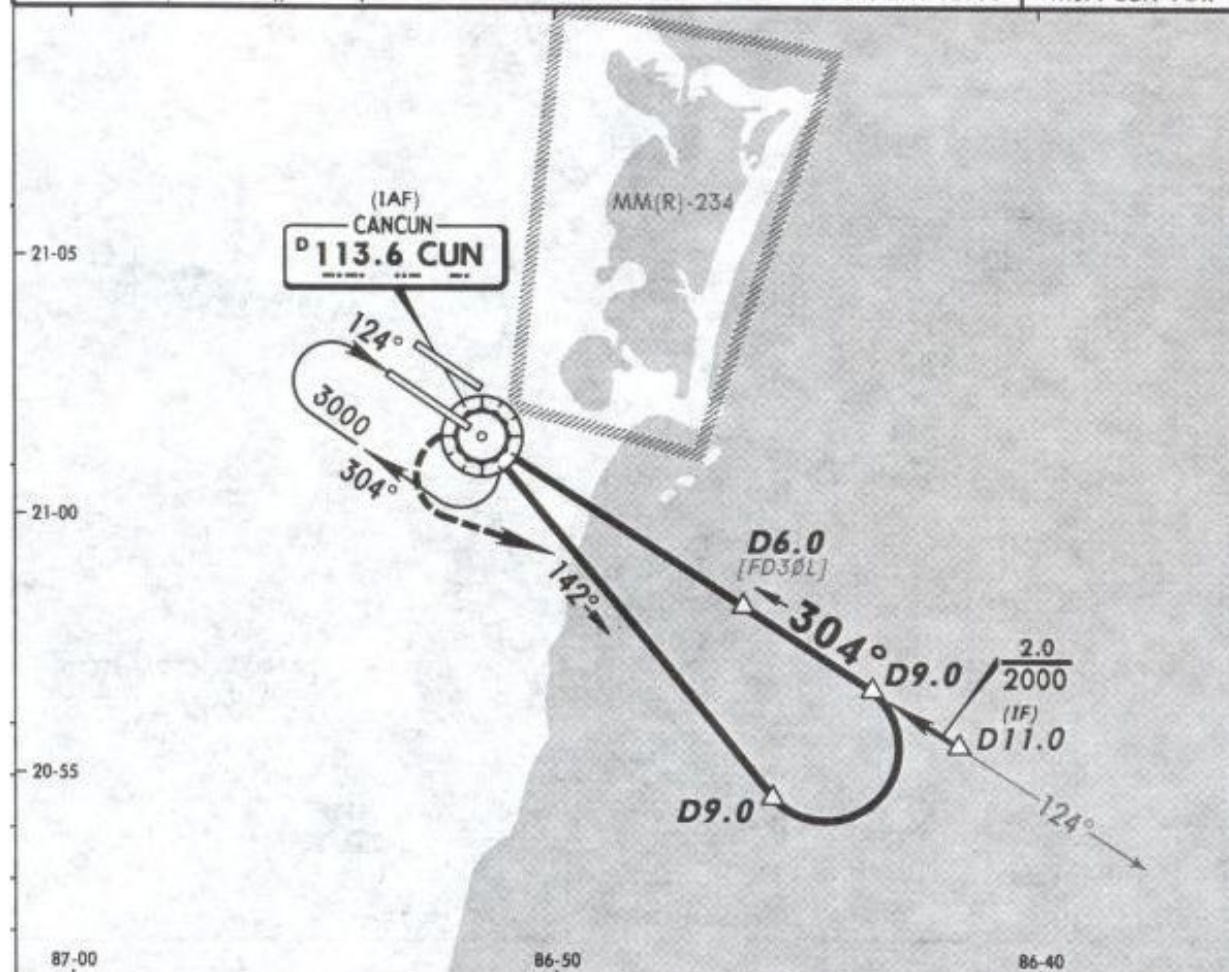
MMUN/CUN  
CANCUN INTL

13 NOV 09

(13-5)

CANCUN, MEXICO  
VOR DME 1 Rwy 30L

*ATIS 127.7	*CANCUN Approach (R) 121.1	CANCUN Arrival 123.2	CANCUN Tower 118.6	*Ground 121.7
VOR CUN 113.6	Final Apch Crs 304°	Minimum Alt D6.0 1300' (1280')	MDA(H) 420' (400')	Appt Elev 20'
<p><b>MISSED APCH:</b> LEFT turn to intercept CUN VOR R-142, proceed on approach track of VOR DME 1 Rwy 30L until reaching the minimum holding altitude.</p>				
<p>Alt Set: MB (IN on req)    Appt Elev: 1 MB    Trans level: FL 195    Trans alt: 18500'    MSA CUN VOR</p>				



Gnd speed-Kts	70	90	100	120	140	160			
Descent angle [3.00°]	372	478	531	637	743	849			
MAP at VOR									

STRAIGHT-IN LANDING RWY 30L				CIRCLE-TO-LAND			
MDA(H) 420' (400')				Not Authorized Northeast of Rwy 12R/30L			
A				Max Kts		MDA(H)	
B				90		480' (460') - 1	
C				120		480' (460') - 1 1/2	
D				140		480' (460') - 1 1/2	
				165		580' (560') - 2	