

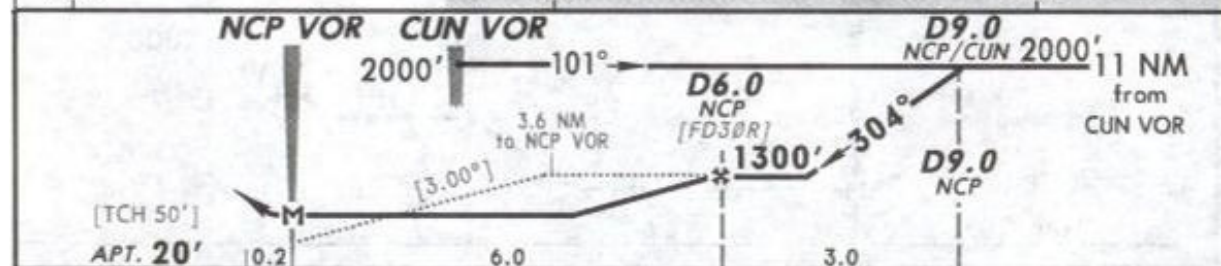
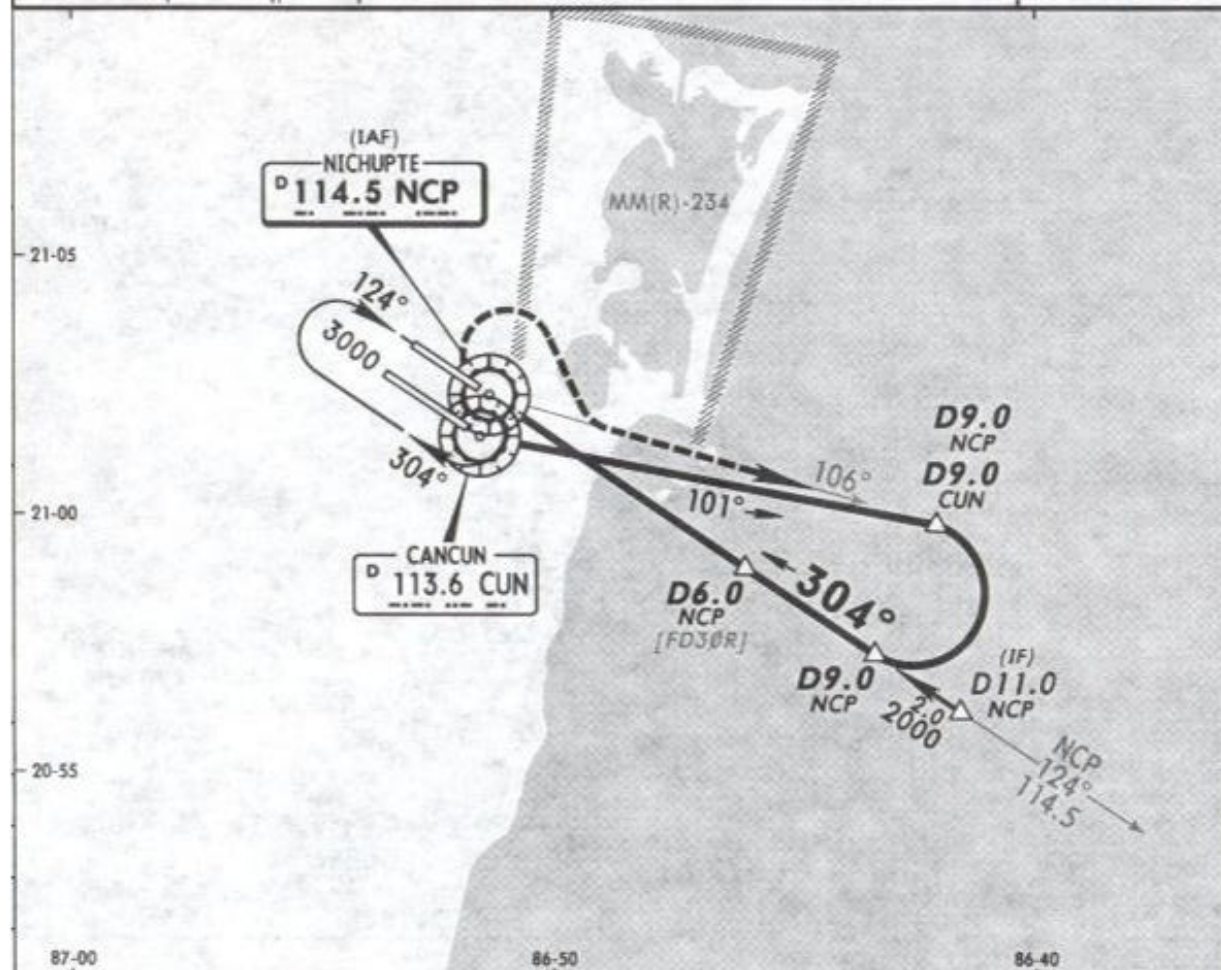
MMUN/CUN
CANCUN INTL

13 NOV 09

(13-7)

CANCUN, MEXICO
VOR DME 1 Rwy 30R

*ATIS 127.7	*CANCUN Approach (R) 121.1	CANCUN Arrival 123.2	CANCUN Tower 118.6	*Ground 121.7
VOR NCP 114.5	Final Apch Crs 304°	Minimum Alt D6.0 NCP 1300' (1280')	MDA(H) 420' (400')	Apt Elev 20'
<p>MISSED APCH: RIGHT turn to intercept NCP VOR R-106 outbound to D9.0 NCP, proceed on approach track of VOR DME 1 Rwy 30R until reaching the minimum holding altitude.</p> <p>Alt Set: MB (IN on req) Apt Elev: 1 MB Trans level: FL 195 Trans alt: 18500'</p>				
				MSA NCP VOR



Gnd speed-Kts	70	90	100	120	140	160
Descent angle [3.00°]	372	478	531	637	743	849
MAP at NCP VOR						

STRAIGHT-IN LANDING RWY 30R			CIRCLE-TO-LAND		
MDA(H) 420' (400')			Not Authorized Southwest of Rwy 12L/30R		
A		Max Kts	MDA(H)		
B	1	90	480' (460') - 1		
C		120	480' (460') - 1½		
D	1¼	140	480' (460') - 1½		
		165	580' (560') - 2		