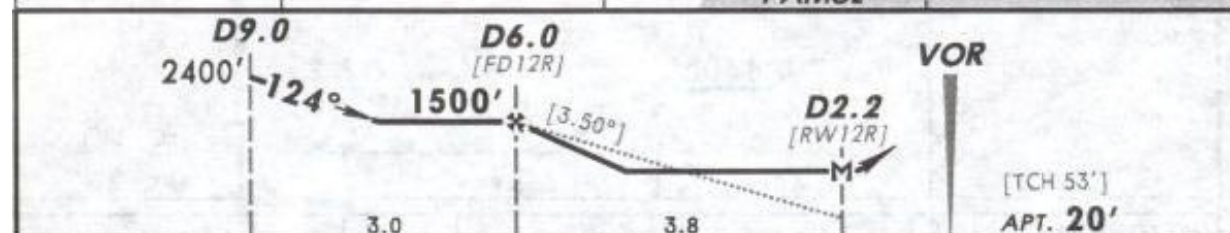
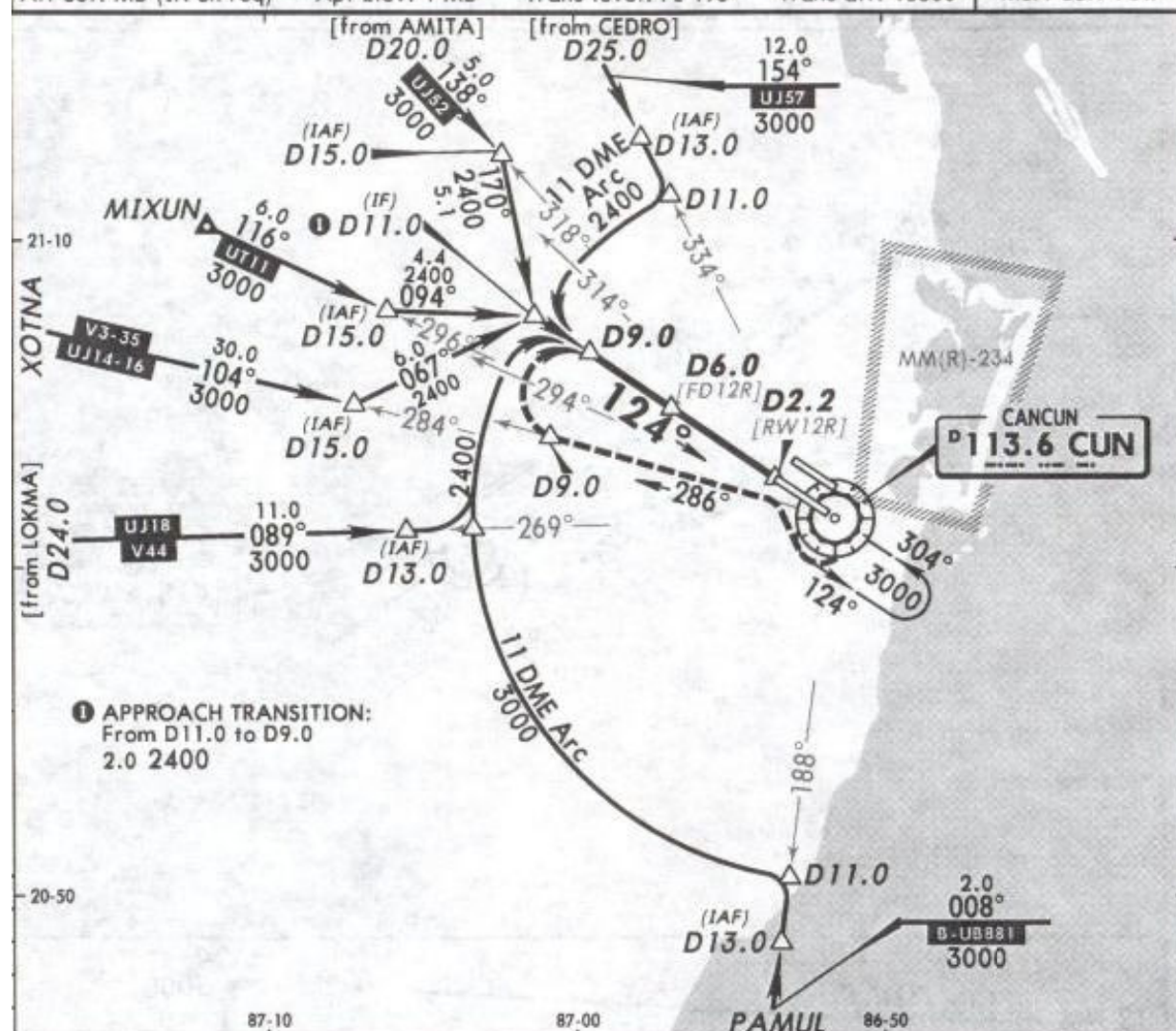


MMUN/CUN  
CANCUN INTL

13 NOV 09 (13-4)

CANCUN, MEXICO  
VOR DME 2 Rwy 12R

*ATIS 127.7	*CANCUN Approach (R) 121.1	CANCUN Arrival 123.2	CANCUN Tower 118.6	*Ground 121.7
VOR CUN 113.6	Final Apch Crs 124°	Minimum Alt D6.0 1500' (1480')	MDA(H) 420' (400')	Apf Elev 20'
MISSED APCH: RIGHT turn to intercept CUN VOR R-286 outbound, at D9.0 CUN turn RIGHT to intercept CUN VOR R-304 inbound to CUN VOR to the minimum holding altitude.				2000'
Alt Set: MB (IN on req)	Apf Elev: 1 MB	Trans level: FL 195	Trans alt: 18500'	MSA CUN VOR



Gnd speed-Kts	70	90	100	120	140	160
Descent angle [3.50°]	434	557	619	743	867	991
MAP at D2.2						

STRAIGHT-IN LANDING RWY 12R			CIRCLE-TO-LAND		
MDA(H) 420' (400')			Not Authorized Northeast of Rwy 12R/30L		
ALS out			MDA(H)		
A		Max Kts	90	480' (460') - 1	
B	1	120	120	480' (460') - 1 1/2	
C		140	140	480' (460') - 1 1/2	
D	1 1/4	165	165	580' (560') - 2	