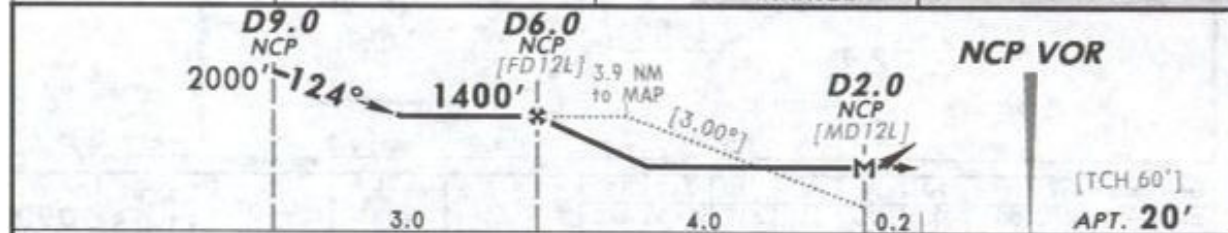
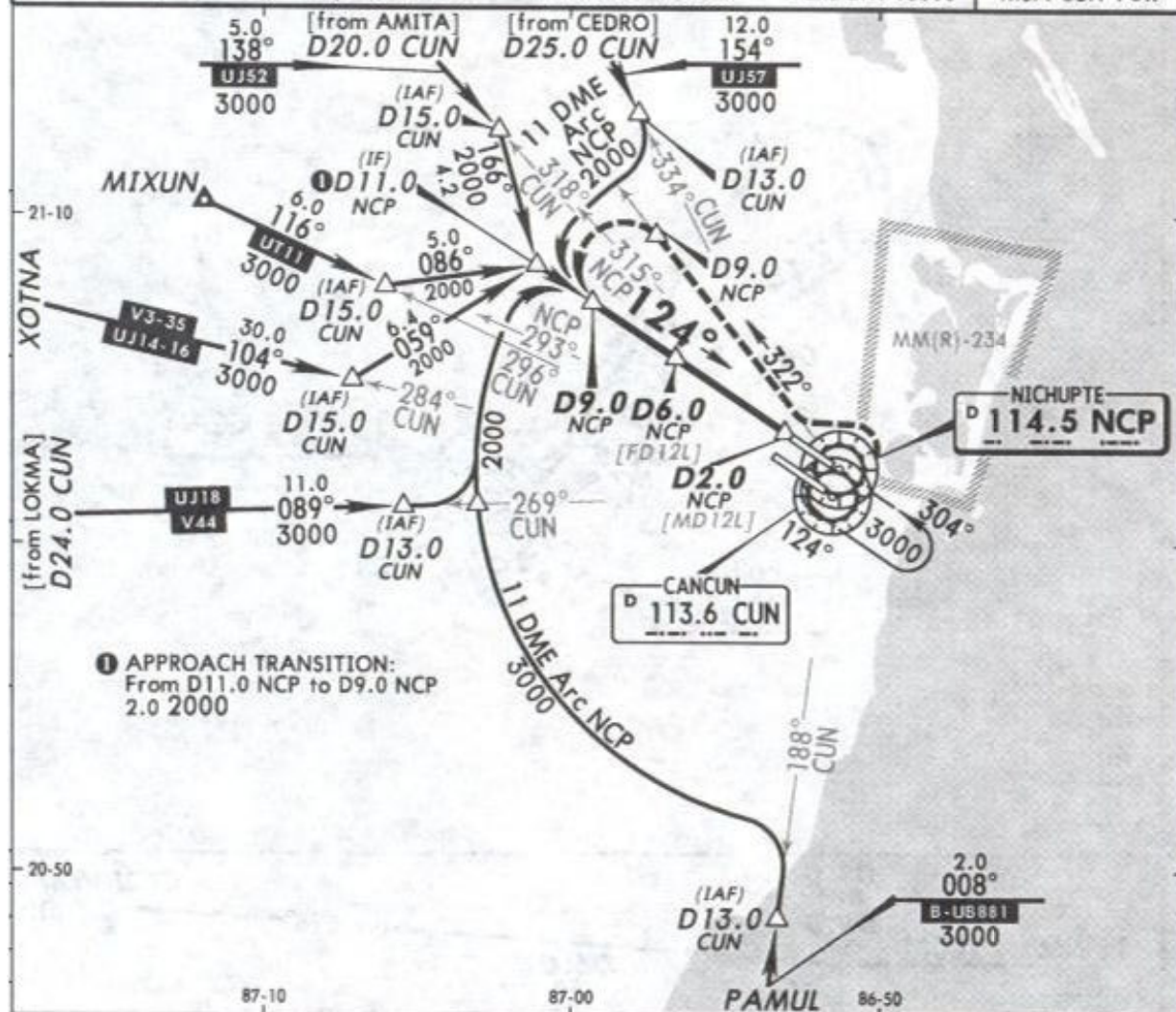


MMUN/CUN
CANCUN INTL

13 NOV 09 (13-2)

CANCUN, MEXICO
VOR DME 2 Rwy 12L

*ATIS 127.7	*CANCUN Approach (R) 121.1	CANCUN Arrival 123.2	CANCUN Tower 118.6	*Ground 121.7
VOR NCP 114.5	Final Apch Crs 124°	Minimum Alt D6.0 NCP 1400' (1380')	MDA(H) 420' (400')	Apt Elev 20'
<p>MISSED APCH: LEFT turn to intercept NCP VOR R-322 to D9.0 NCP, then turn LEFT to intercept NCP VOR R-304 inbound to NCP VOR to the minimum holding altitude.</p> <p>Alt Set: MB (IN on req) Apt Elev: 1 MB Trans level: FL 195 Trans alt: 18500' MSA CUN VOR</p>				



Gnd speed-Kts	70	90	100	120	140	160
Descent angle [3.00°]	372	478	531	637	743	849
MAP at D2.0 NCP						

STRAIGHT-IN LANDING RWY 12L			CIRCLE-TO-LAND		
MDA(H) 420' (400')			Not Authorized Southwest of Rwy 12L/30R		
ALS out			MDA(H)		
A		Max Kts			
B	1	90		480' (460') - 1	
C		120		480' (460') - 1 1/2	
D	1 1/4	140		580' (560') - 2	