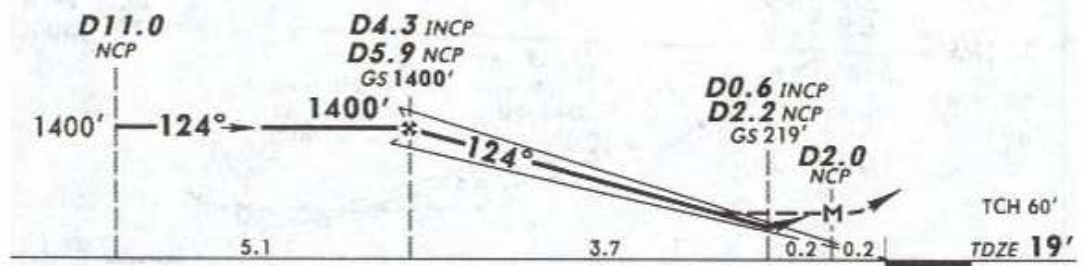
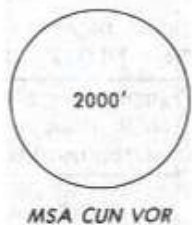
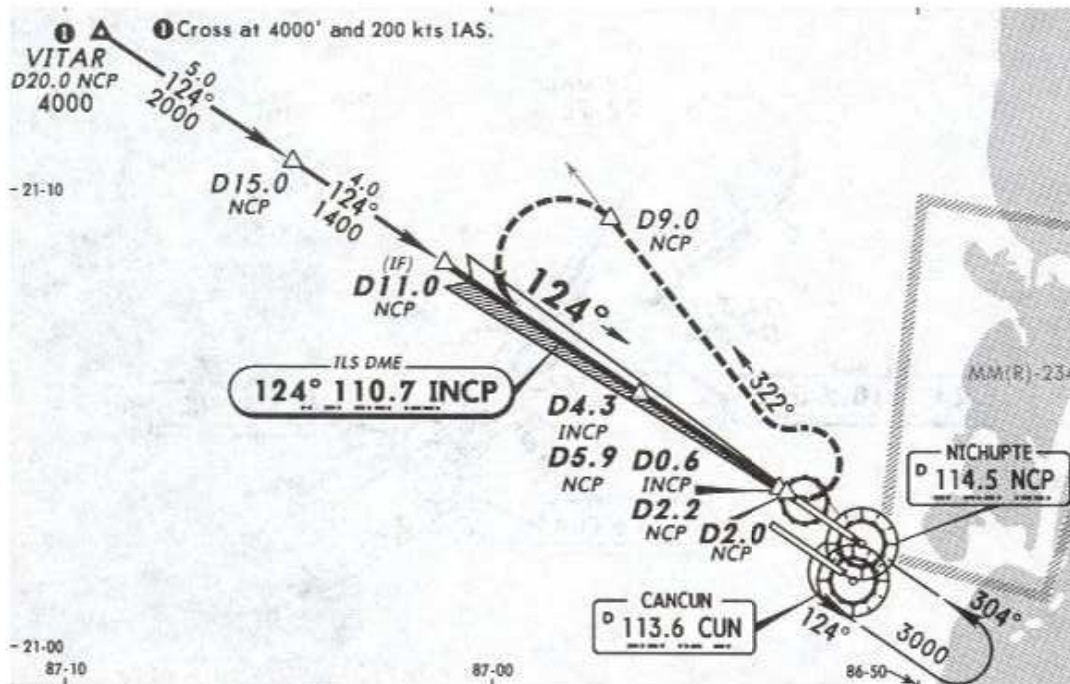


19 FEB 10

| *ATIS | *CANCUN Approach (R) | CANCUN Arrival | CANCUN Tower | *Ground |
|-------|----------------------|----------------|--------------|---------|
| 127.7 | 121.1 | 123.2 | 118.6 | 121.7 |

| LOC INCP | Final Apch Crs | GS D4.3 INCP D5.9 NCP | ILS DA(H) (CONDITIONAL) | Apt Elev 22' |
|-------------|-------------------|-----------------------------|-------------------------------|--------------|
| 110.7 | 124° | 1400' (1381') | 219' (200') | TDZE 19' |



MISSED APCH: LEFT turn to intercept NCP VOR R-322 outbound to D9.0 NCP, then turn LEFT to intercept NCP VOR R-304 inbound to NCP VOR at the minimum holding altitude.

Alt Set: MB (IN on req) TDZ Elev: 1 MB Trans level: FL 195 Trans alt: 18500'
1. DME/ILS usable with DME equipped aircraft with accurate instrument reading within 0.2 NM.

NOT TO BE USED FOR ACTUAL NAVIGATION