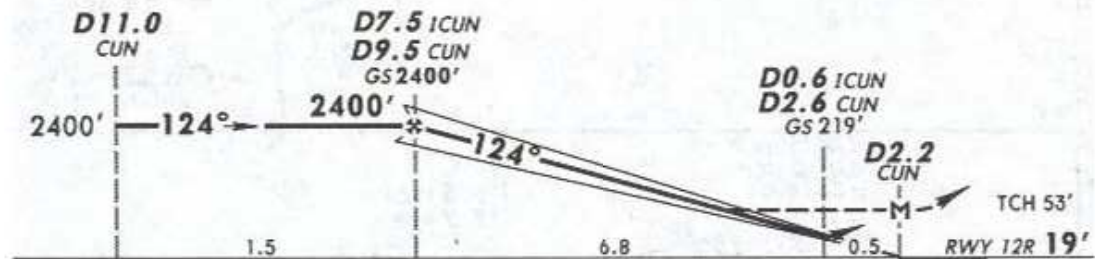
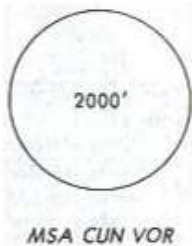
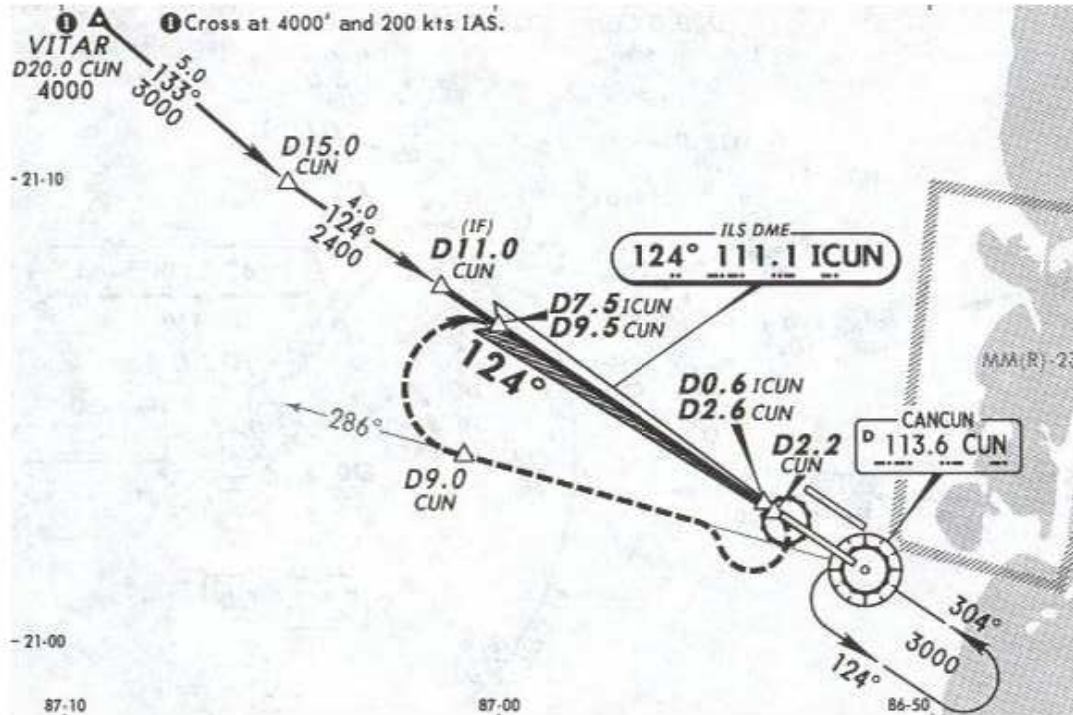


19 FEB 10

*ATIS	*CANCUN Approach (R)	CANCUN Arrival	CANCUN Tower	*Ground
127.7	121.1	123.2	118.6	121.7

*ATIS	*CANCUN Approach (R)	CANCUN Arrival	CANCUN Tower	
127.7	121.1	123.2	118.6	
LOC ICUN 111.1	Final Apch Crs 124°	GS D7.5 ICUN D9.5 CUN 2400' (2381')	ILS DA(H) (CONDITIONAL) 219' (200')	Apt Elev 22' Rwy 12R 19'



MISSED APCH: RIGHT turn to intercept CUN VOR R-286 outbound to D9.0 CUN, then turn RIGHT to intercept CUN VOR R-304 inbound at D9.5 CUN to CUN VOR to the minimum holding altitude.

Alt Set: MB (IN on req) Rwy Elev: 1 MB Trans level: FL 195 Trans alt: 18500'
1. DME/ILS usable with DME equipped aircraft with accurate instrument reading within 0.2 NM.

NOT TO BE USED FOR ACTUAL NAVIGATION