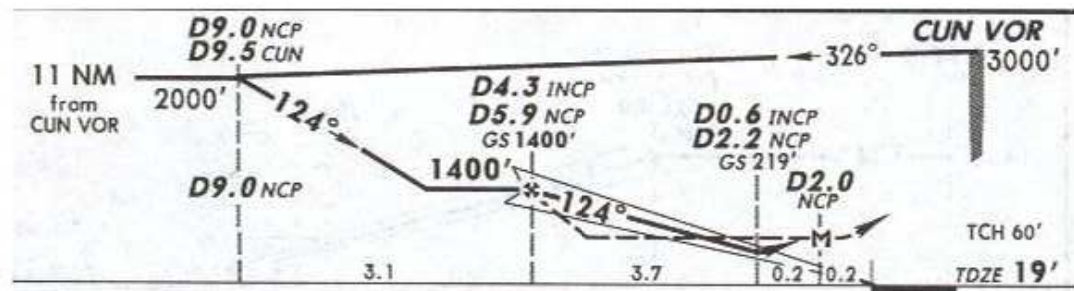
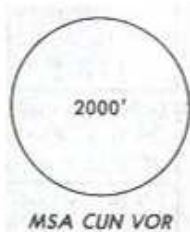
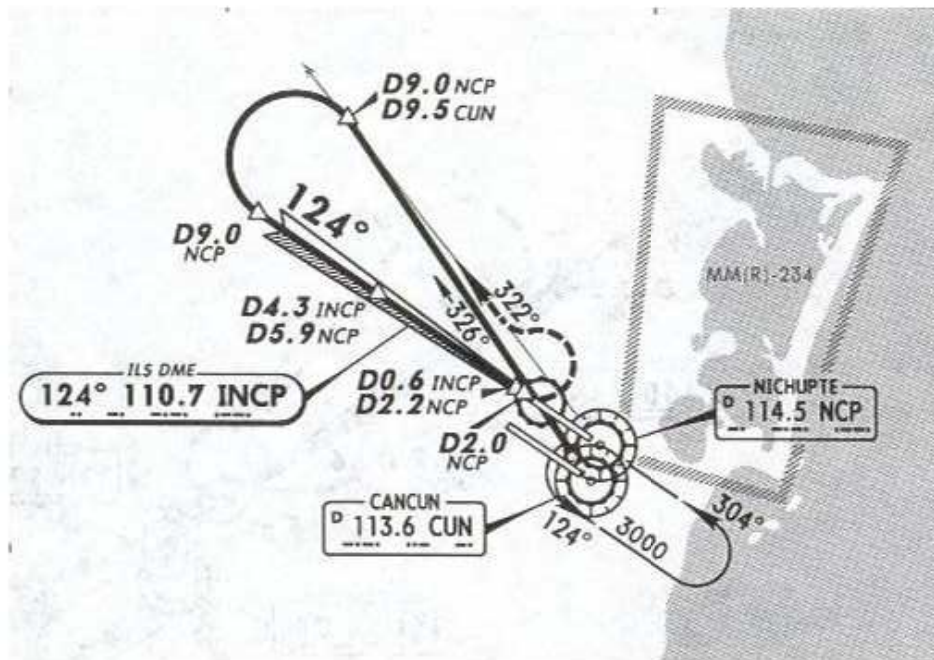


19 FEB 10

LOC INCP 110.7	Final Apch Crs 124°	GS D4.3 INCP D5.9 NCP 1400' (1381')	ILS DA(H) (CONDITIONAL) 219' (200')	Apt Elev 22' TDZE 19'
----------------------	---------------------------	----------------------------------------------	----------------------------------------------	--------------------------

*ATIS 127.7	*CANCUN Approach (R) 121.1	CANCUN Arrival 123.2	CANCUN Tower 118.6	*Ground 121.7
----------------	-------------------------------	-------------------------	-----------------------	------------------



MISSED APCH: LEFT turn to intercept NCP VOR R-322 outbound to D9.0 NCP, then turn LEFT to intercept NCP VOR R-304 inbound to NCP VOR at the minimum holding altitude.

Alt Set: MB (IN on req) TDZ Elev: 1 MB Trans level: FL 195 Trans alt: 18500'
1. DME/ILS usable with DME equipped aircraft with accurate instrument reading within 0.2 NM.

NOT TO BE USED FOR ACTUAL NAVIGATION