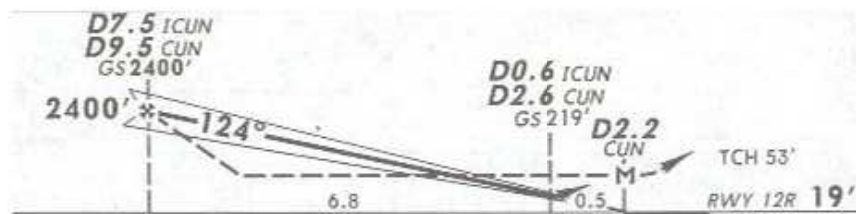
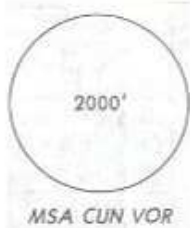
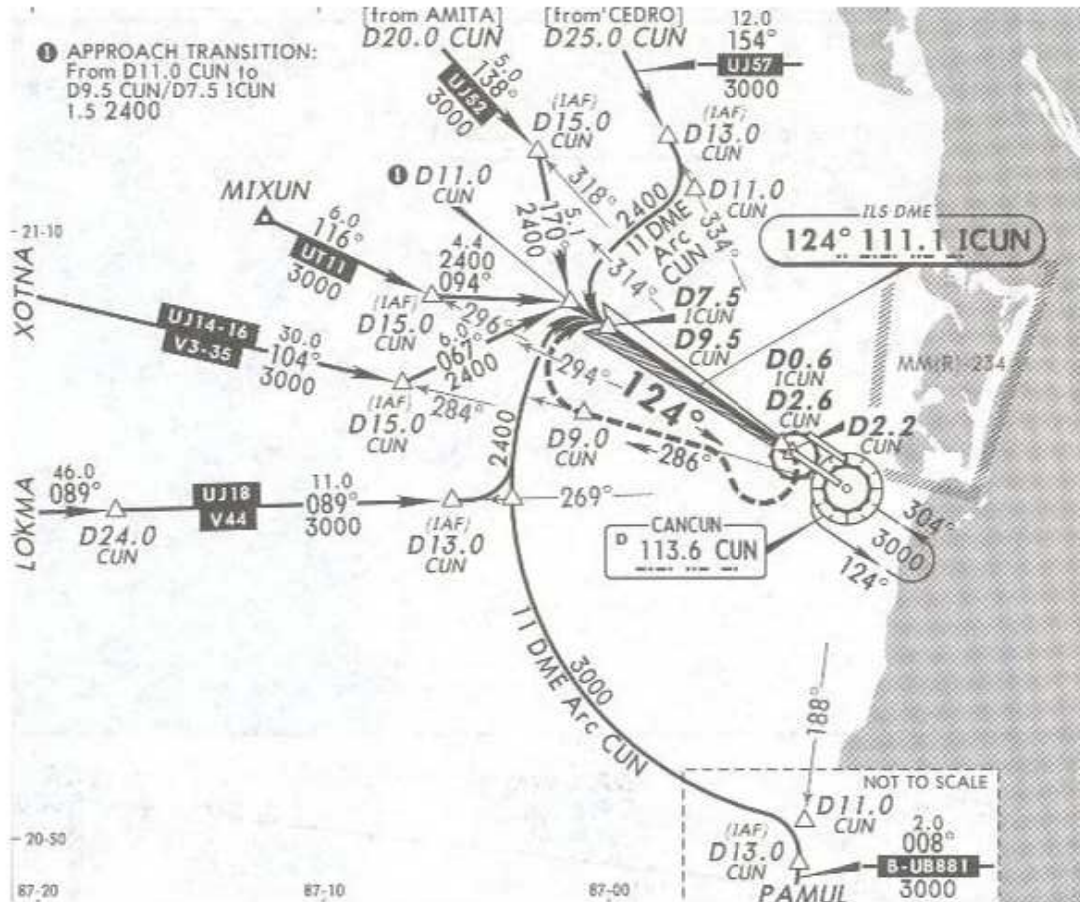


8 JAN 10

*ATIS 127.7	*CANCUN Approach (R) 121.1	CANCUN Arrival 123.2	CANCUN Tower 118.6	*Ground 121.7
----------------	-------------------------------	-------------------------	-----------------------	------------------

LOC ICUN 111.1	Final Apch Crs 124°	GS D7.5 ICUN D9.5 CUN 2400' (2381')	ILS DA(H) (CONDITIONAL) 219' (200')	Apt Elev 20' Rwy 12R 19'
----------------------	---------------------------	--	--	-----------------------------



MISSED APCH: RIGHT turn to intercept CUN VOR R-286 outbound to D9.0 CUN, then turn RIGHT to intercept CUN VOR R-304 inbound at D9.5 CUN to CUN VOR to the minimum holding altitude.

Alt Set: MB (IN on req) Rwy Elev: 1 MB Trans level: FL 195 Trans alt: 18500'
I. DME/ILS usable with DME equipped aircraft with accurate instrument reading within 0.2 NM.

NOT TO BE USED FOR ACTUAL NAVIGATION