

*CANCUN Departure (R)
119.8

Apt Elev
20'

Trans level: FL195 Trans alt: 18500'

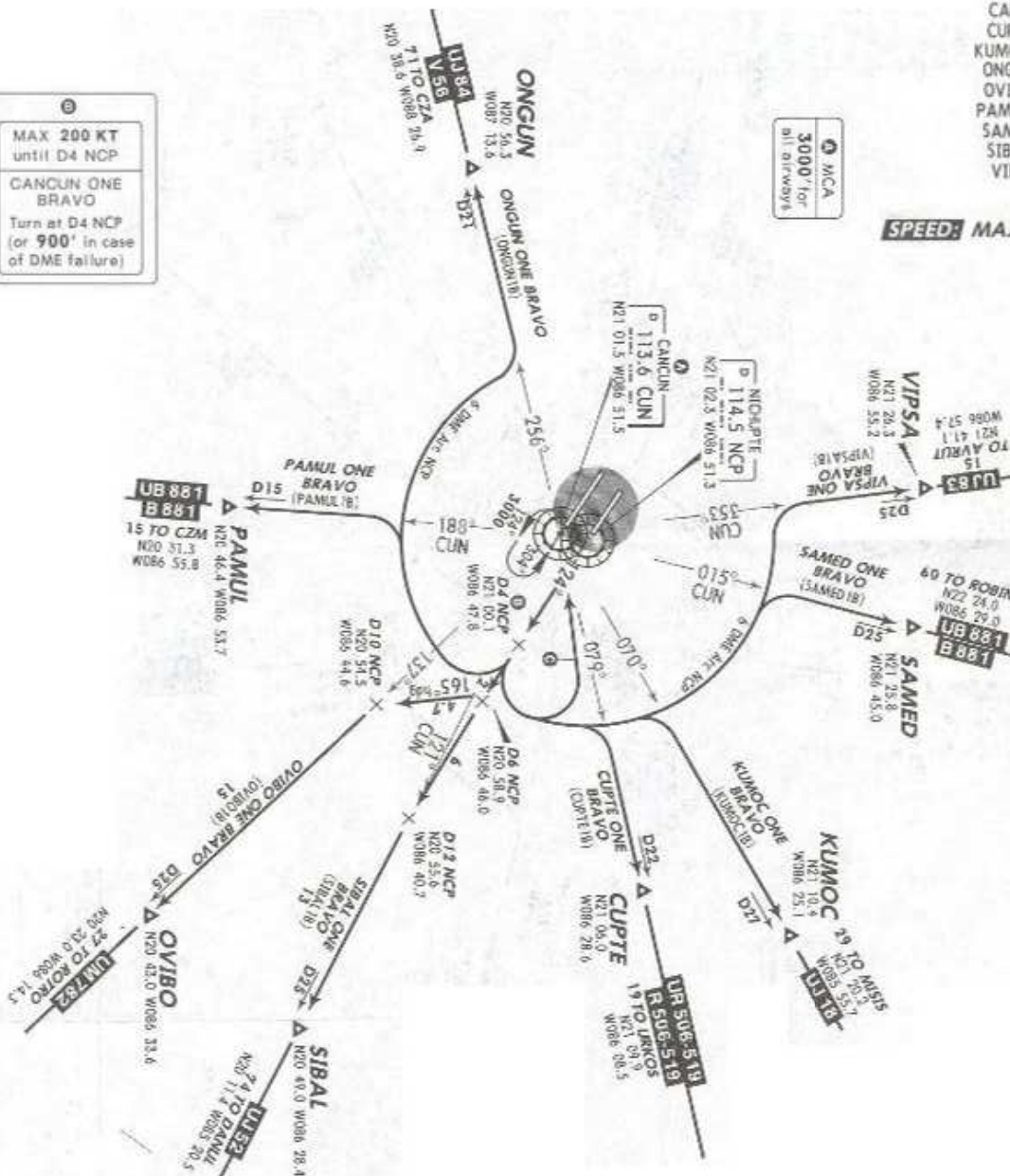
DEPARTURES RWY 12L

CANCUN ONE BRAVO (CUN1B),
CUPTÉ ONE BRAVO (CUPTÉ1B),
KUMOC ONE BRAVO (KUMOC1B),
ONGUN ONE BRAVO (ONGUN1B),
OVIBO ONE BRAVO (OVIBO1B),
PAMUL ONE BRAVO (PAMUL1B),
SAMED ONE BRAVO (SAMED1B),
SIBAL ONE BRAVO (SIBAL1B),
VIPSA ONE BRAVO (VIPSA1B)

SPEED: MAX 200 KT UNTIL D4 NCP

MAX 200 KT
until D4 NCP
CANCUN ONE
BRAVO
Turn at D4 NCP
(or 900' in case
of DME failure)

MCA
3000' for
all airways



CANCUN ONE BRAVO (CUN1B)

SID	INITIAL CLIMB	ALTITUDE
CANCUN ONE BRAVO	Climb on NCP R-124 to D4 NCP, (or 900' in case of DME failure). Turn LEFT within 6 NM to CUN and depart at the MCA for the assigned route or in accordance with ATC instructions.	MAINTAIN 7000' Continue climb in accordance with ATC instructions
CUPTÉ ONE BRAVO KUMOC ONE BRAVO SAMED ONE BRAVO VIPSA ONE BRAVO	Climb on NCP R-124 to D4 NCP. Turn LEFT on NCP 6 DME Arc to intercept the corresponding radial from CUN to CUPTÉ, KUMOC, SAMED or VIPSA. Then continue on the assigned route or in accordance with ATC instructions.	
ONGUN ONE BRAVO PAMUL ONE BRAVO	Climb on NCP R-124 to D4 NCP. Turn RIGHT on NCP 6 DME Arc to intercept the corresponding radial from CUN to ONGUN or PAMUL, then continue on assigned route or in accordance with ATC instructions.	
OVIBO ONE BRAVO	Climb on NCP R-124 to D6 NCP. Turn RIGHT 165° heading to intercept CUN R-137 to OVIBO. Then continue on the assigned route or in accordance with ATC instructions.	
SIBAL ONE BRAVO	Climb on NCP R-124 to D12 NCP and intercept CUN R-121 to SIBAL. Then continue on the assigned route or in accordance with ATC instructions.	

NOT TO BE USED FOR ACTUAL NAVIGATION