

DEPARTURES RWY 30L

Trans level: FL195 Trans alt: 18500'

*CANCUN Departure (R)
119.8

Apt Elev
20'

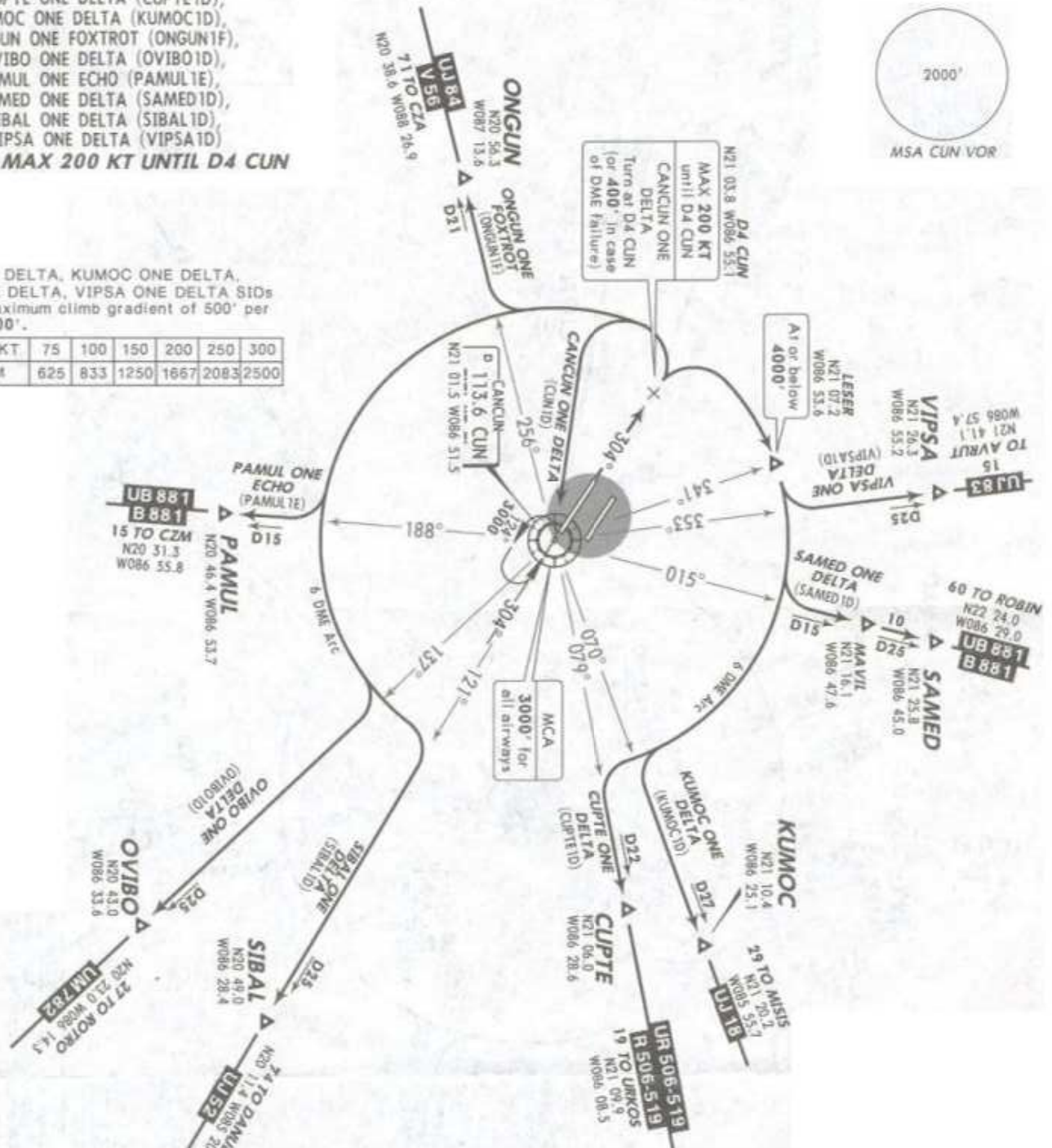
11 DEC 09

CANCUN ONE DELTA (CUN1D),
CUPTÉ ONE DELTA (CUPTÉ1D),
KUMOC ONE DELTA (KUMOC1D),
ONGUN ONE FOXTROT (ONGUN1F),
OVIBO ONE DELTA (OVIBO1D),
PAMUL ONE ECHO (PAMUL1E),
SAMED ONE DELTA (SAMED1D),
SIBAL ONE DELTA (SIBAL1D),
VIPSA ONE DELTA (VIPSA1D)

SPEED: MAX 200 KT UNTIL D4 CUN

CUPTÉ ONE DELTA, KUMOC ONE DELTA,
SAMED ONE DELTA, VIPSA ONE DELTA SIDs
require a maximum climb gradient of 500' per
NM until 4000'.

Gnd speed-KT	75	100	150	200	250	300
500' per NM	625	833	1250	1667	2083	2500



SID	INITIAL CLIMB	ALTITUDE
CANCUN ONE DELTA	Climb on CUN R-304 to D4 CUN, (or 400' in case of DME failure). Turn LEFT within 5 NM to CUN and depart at the MCA for the assigned route or in accordance with ATC instructions.	MAINTAIN 7000' Continue climb in accordance with ATC instructions
CUPTÉ ONE DELTA KUMOC ONE DELTA SAMED ONE DELTA VIPSA ONE DELTA	Climb on CUN R-304 to D4 CUN. Turn RIGHT on CUN 6 DME Arc to intercept the corresponding radial from CUN to CUPTÉ, KUMOC, SAMED or VIPSA, then continue on the assigned route or in accordance with ATC instructions.	
ONGUN ONE FOXTROT OVIBO ONE DELTA PAMUL ONE ECHO SIBAL ONE DELTA	Climb on CUN R-304 to D4 CUN. Turn LEFT on CUN 6 DME Arc to intercept the corresponding radial from CUN to ONGUN, OVIBO, PAMUL or SIBAL, then continue on assigned route or in accordance with ATC instructions.	

NOT TO BE USED FOR ACTUAL NAVIGATION