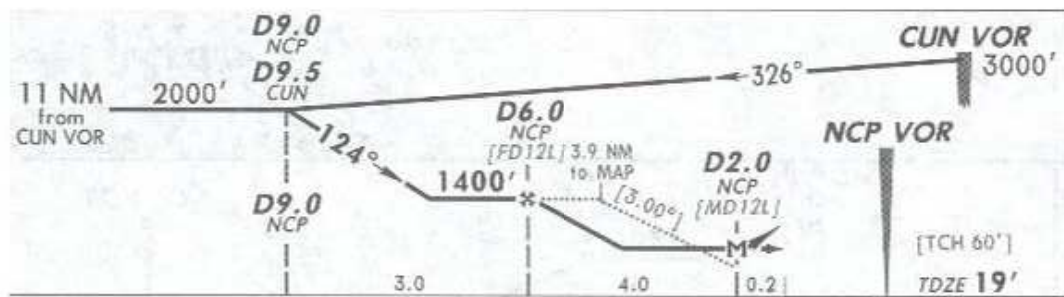
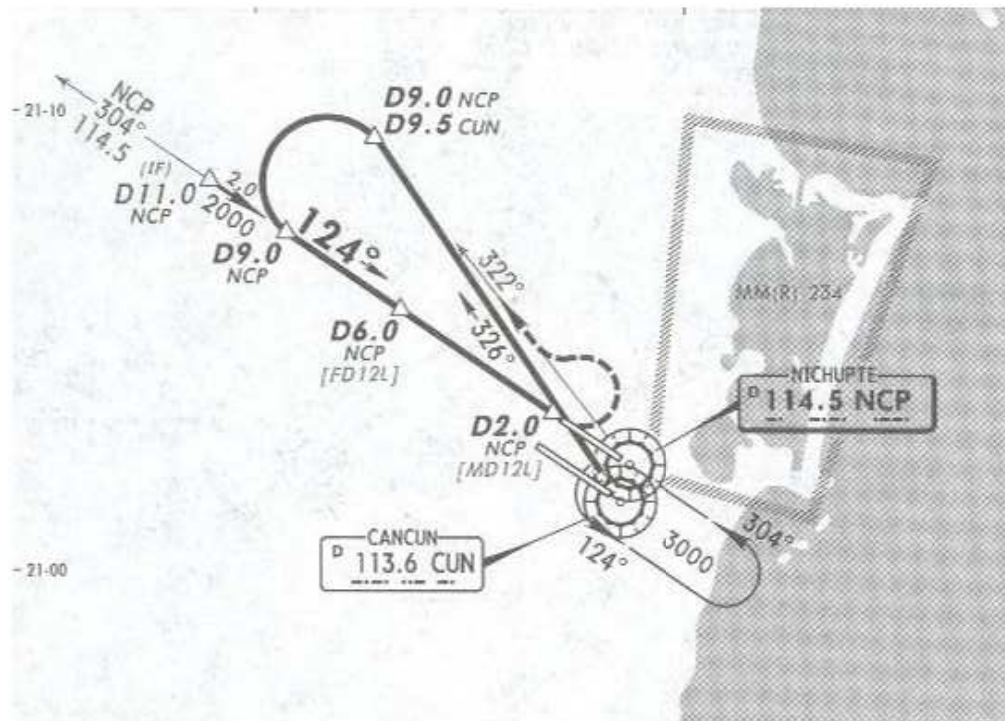


8 JAN 10

#ATIS	#CANCUN Approach (R)	CANCUN Arrival	CANCUN Tower	#Ground
127.7	121.1	123.2	118.6	121.7

VOR NCP	Final Apch Crs	Minimum Alt D6.0 NCP	MDA(H)	Apt Elev 20' TDZE 19'
114.5	124°	1400' (1381')	420' (401')	



MISSED APCH: LEFT turn to intercept NCP VOR R-322 outbound to D9.0 NCP, then turn LEFT to intercept NCP VOR R-304 inbound to NCP VOR to the minimum holding altitude.

Alt Set: MB (IN on req) TDZ Elev: 1 MB Trans level: FL 195 Trans alt: 18500'

NOT TO BE USED FOR ACTUAL NAVIGATION