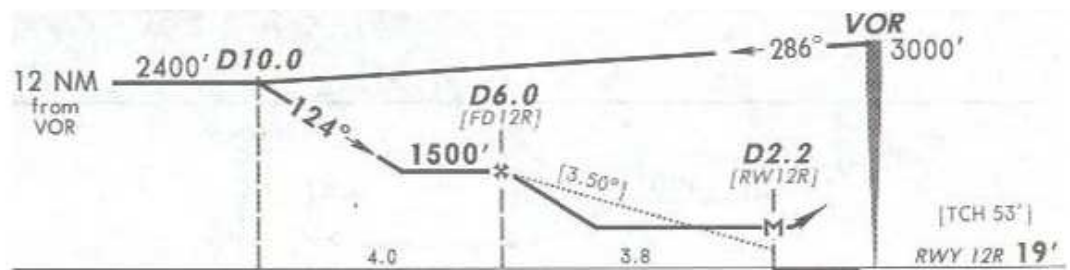
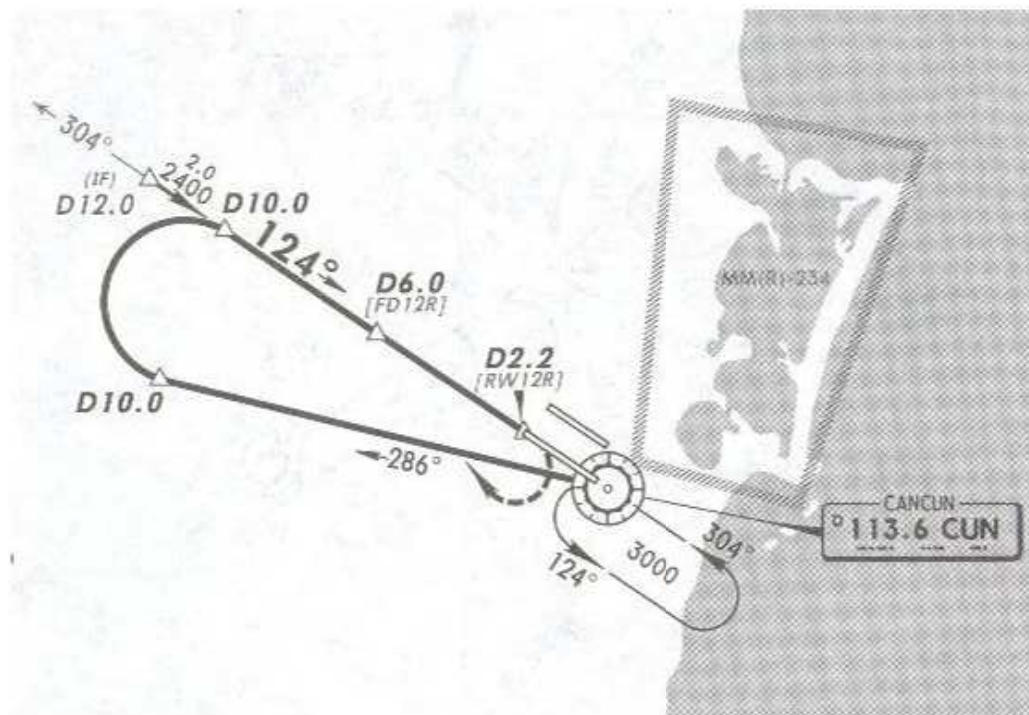


8 JAN 10

*ATIS	*CANCUN Approach (R)	CANCUN Arrival	CANCUN Tower	*Ground
127.7	121.1	123.2	118.6	121.7

VOR CUN	Final Apch Crs	Minimum Alt D6.0	MDA(H)	Apt Elev 20' Rwy 12R 19'
113.6	124°	1500' (1481')	420' (401')	



MISSED APCH: RIGHT turn to intercept CUN VOR R-286 outbound, at D10.0 turn RIGHT to intercept CUN VOR R-304 inbound to CUN VOR to the minimum holding altitude.

Alt Set: MB (IN on real) Rwy Elev: 1 MB Trans level: FL 195 Trans alt: 18500'

NOT TO BE USED FOR ACTUAL NAVIGATION