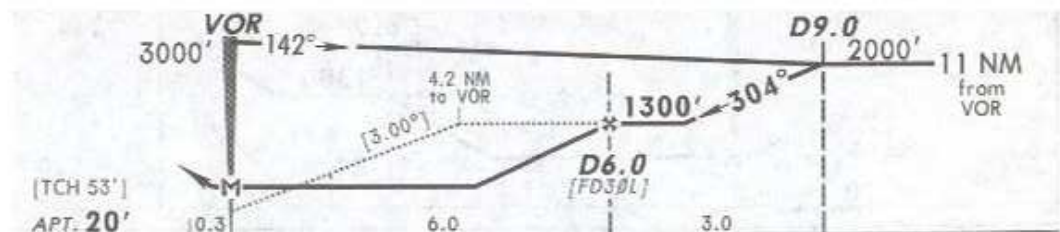
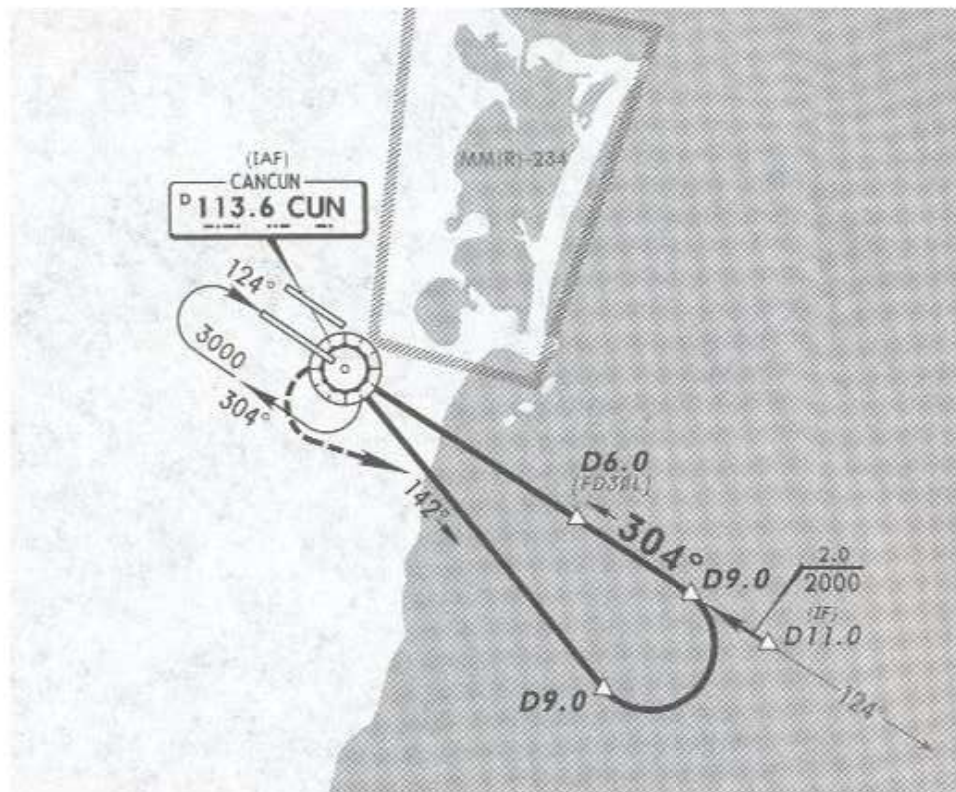


*ATIS	*CANCUN Approach (R)	CANCUN Arrival	CANCUN Tower	*Ground
127.7	121.1	123.2	118.6	121.7

16 OCT 09
Eff 20 Oct

VOR CUN 113.6	Final Apch Crs 304°	Minimum Alt D6.0 1300' (1280')	MDA(H) 420' (400')	Ap! Elev 20'
----------------------------	----------------------------------	---------------------------------------------	------------------------------	---------------------



MISSED APCH: LEFT turn to intercept CUN VOR R-142, proceed on approach track of VOR DME 1 Rwy 30L until reaching the minimum holding altitude.

Alt Set: MB (IN on req) Rwy Elev: 1 MB Trans level: FL 195 Trans alt: 18500'

NOT TO BE USED FOR ACTUAL NAVIGATION