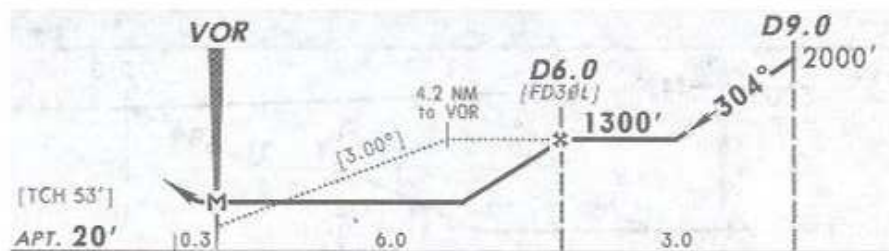
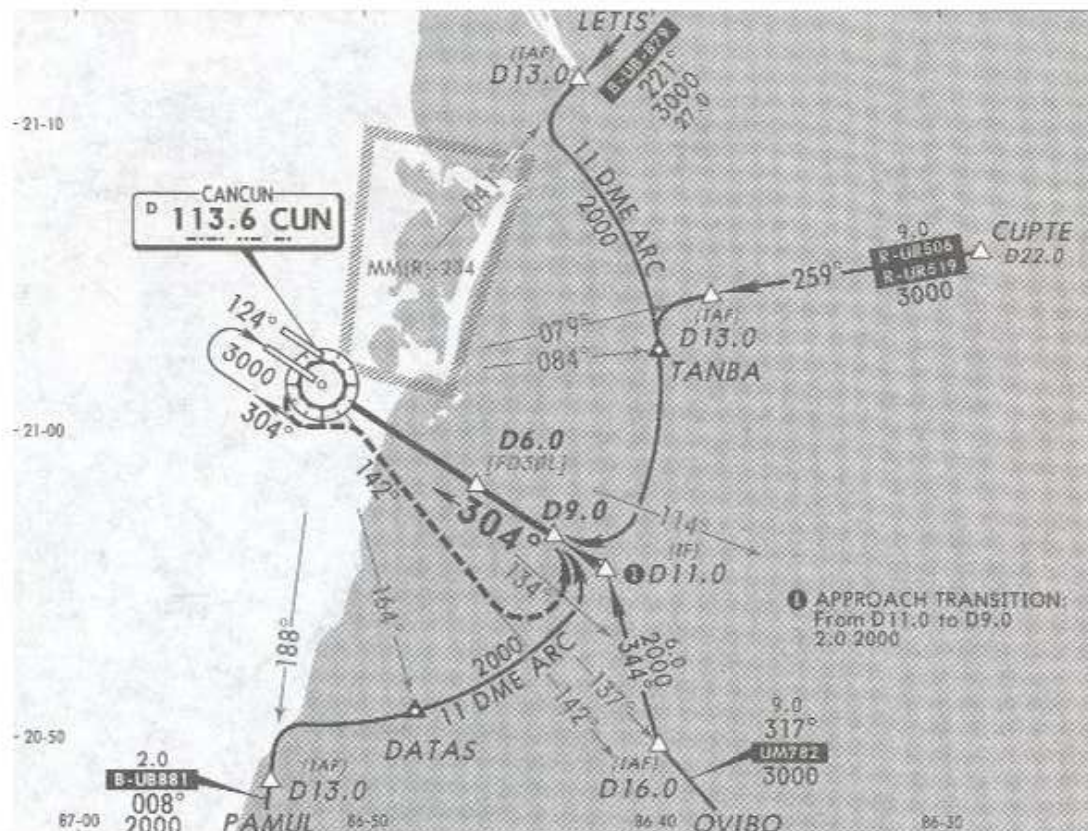


16 OCT 09  
Eff 20 Oct

*ATIS	*CANCUN Approach (R)	CANCUN Arrival	CANCUN Tower	*Ground
127.7	121.1	123.2	118.6	121.7

VOR CUN	Final Apch Crs	Minimum Alt D6.0	MDA(H)	Apt Elev
113.6	304°	1300' (1280')	420' (400')	20'



MISSED APCH: LEFT turn to intercept CUN VOR R-142, proceed on approach track of VOR DME 1 Rwy 30L until reaching minimum holding altitude.

Alt Set: MB (IN on req) Rwy Elev: 1 MB Trans level: FL 195 Trans alt: 18500'

NOT TO BE USED FOR ACTUAL NAVIGATION