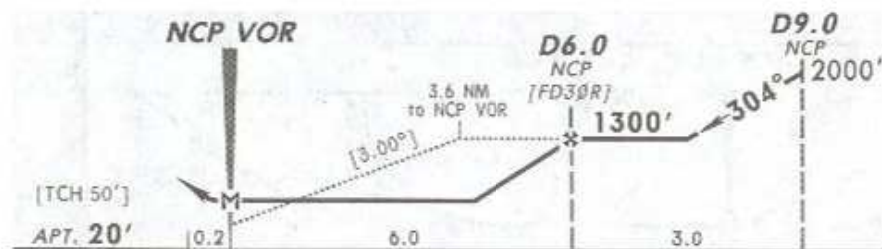
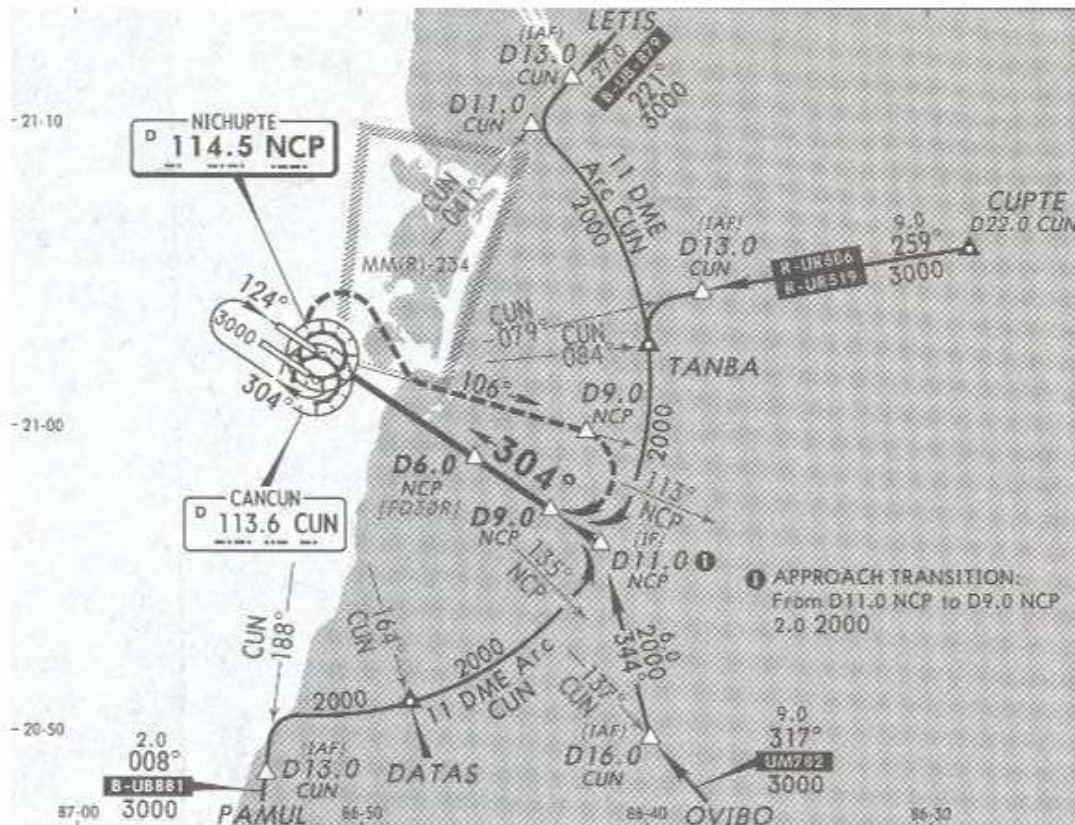


25 DEC 09

*ATIS	*CANCUN Approach (R)	CANCUN Arrival	CANCUN Tower	*Ground
127.7	121.1	123.2	118.6	121.7

VOR NCP 114.5	Final Apch Crs 304°	Minimum Alt D6.0 NCP 1300' (1280')	MDA(H) 420' (400')	Apt Elev 20'
----------------------------	----------------------------------	---	------------------------------	---------------------



MISSED APCH: RIGHT turn to intercept NCP VOR R-106 outbound to D9.0 NCP, proceed on approach track of VOR DME 1 Rwy 30R until reaching the minimum holding altitude.

Alt Set: MB (IN on req) Apt Elev: 1 MB Trans level: FL 195 Trans alt: 18500'

NOT TO BE USED FOR ACTUAL NAVIGATION